



**Front Elevation**

Scale 1:100



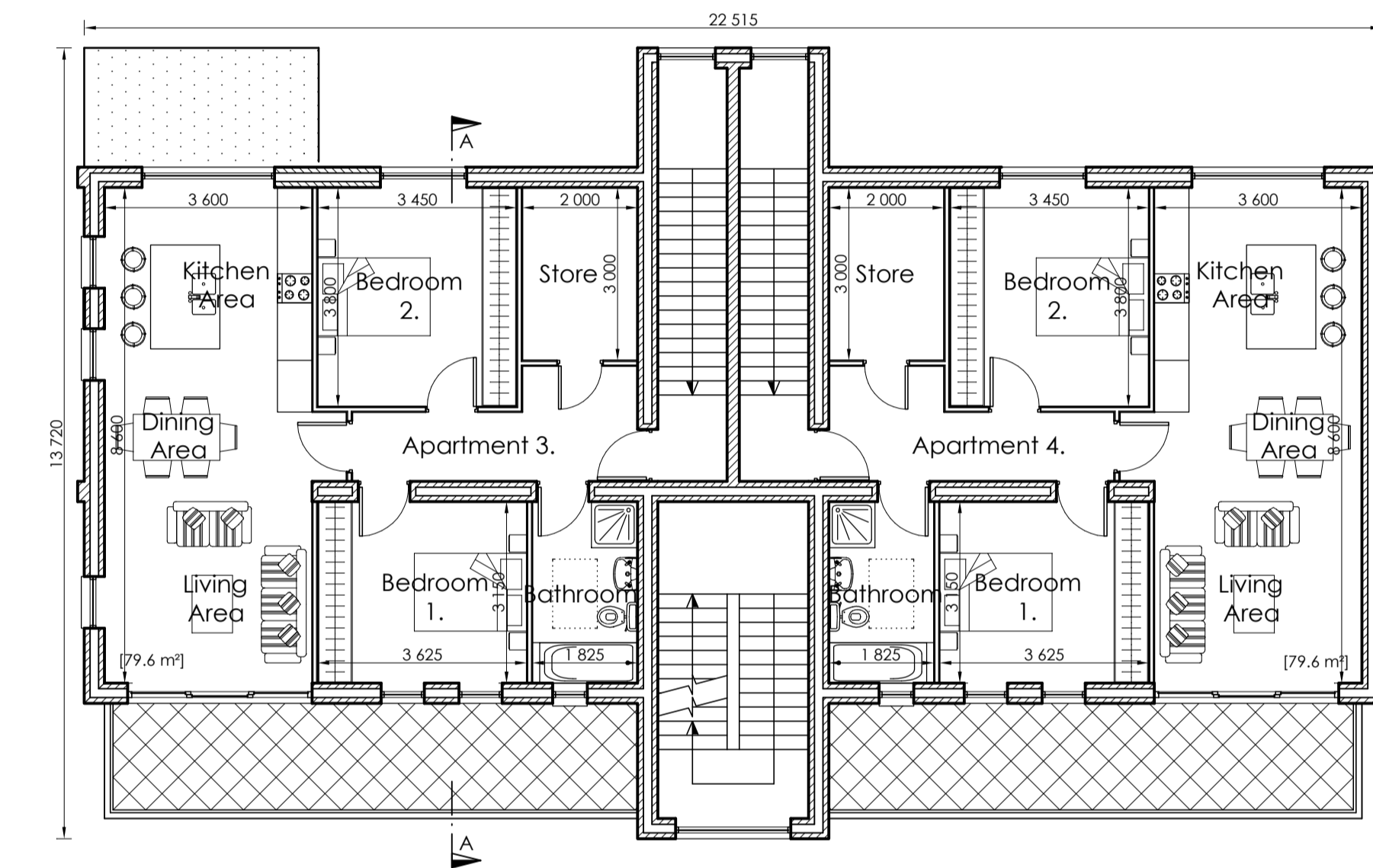
**Side Elevation**

Scale 1:100



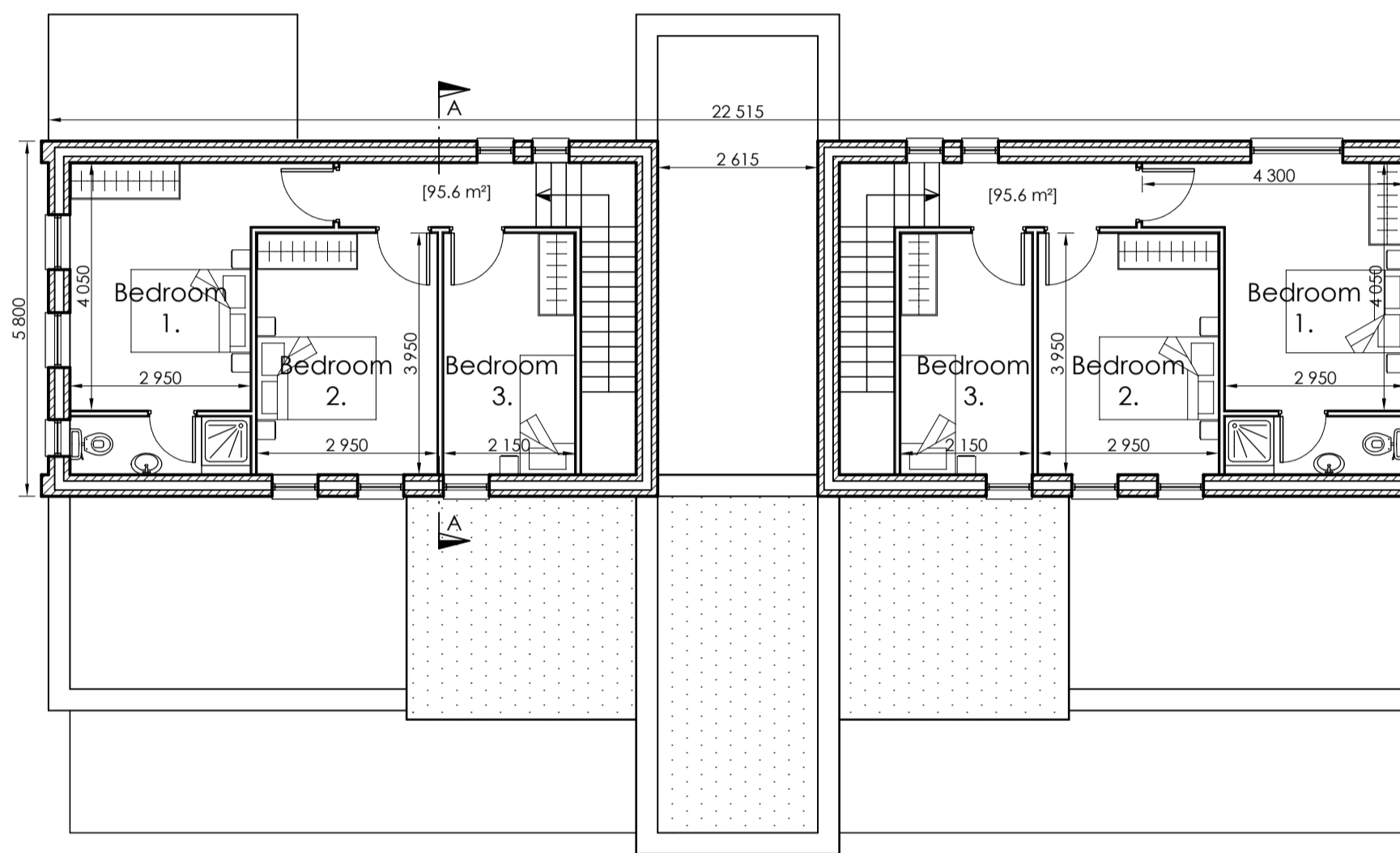
**Rear Elevation**

Scale 1:100



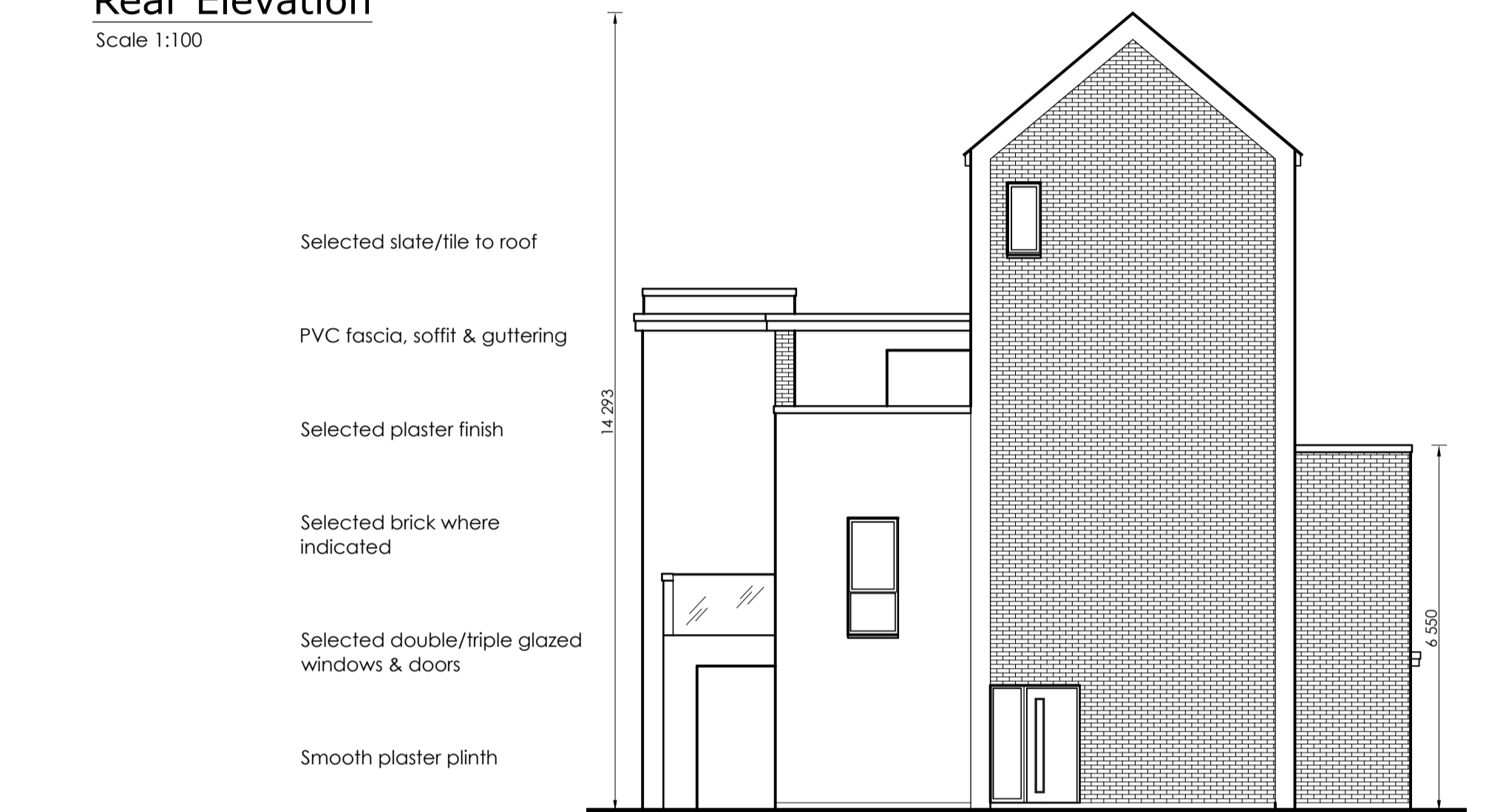
**First Floor Plan**

Scale 1:100



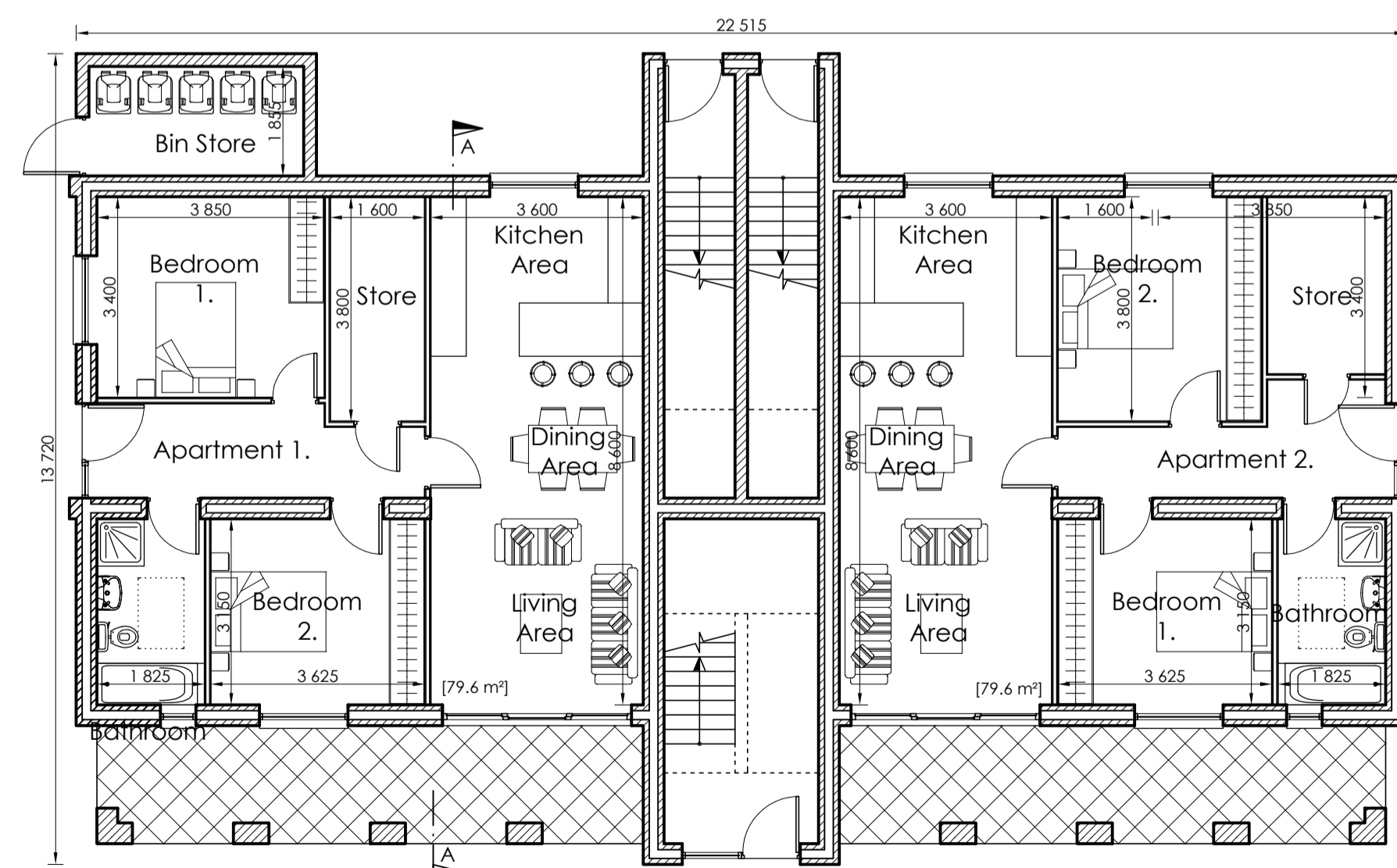
**Third Floor Plan**

Scale 1:100



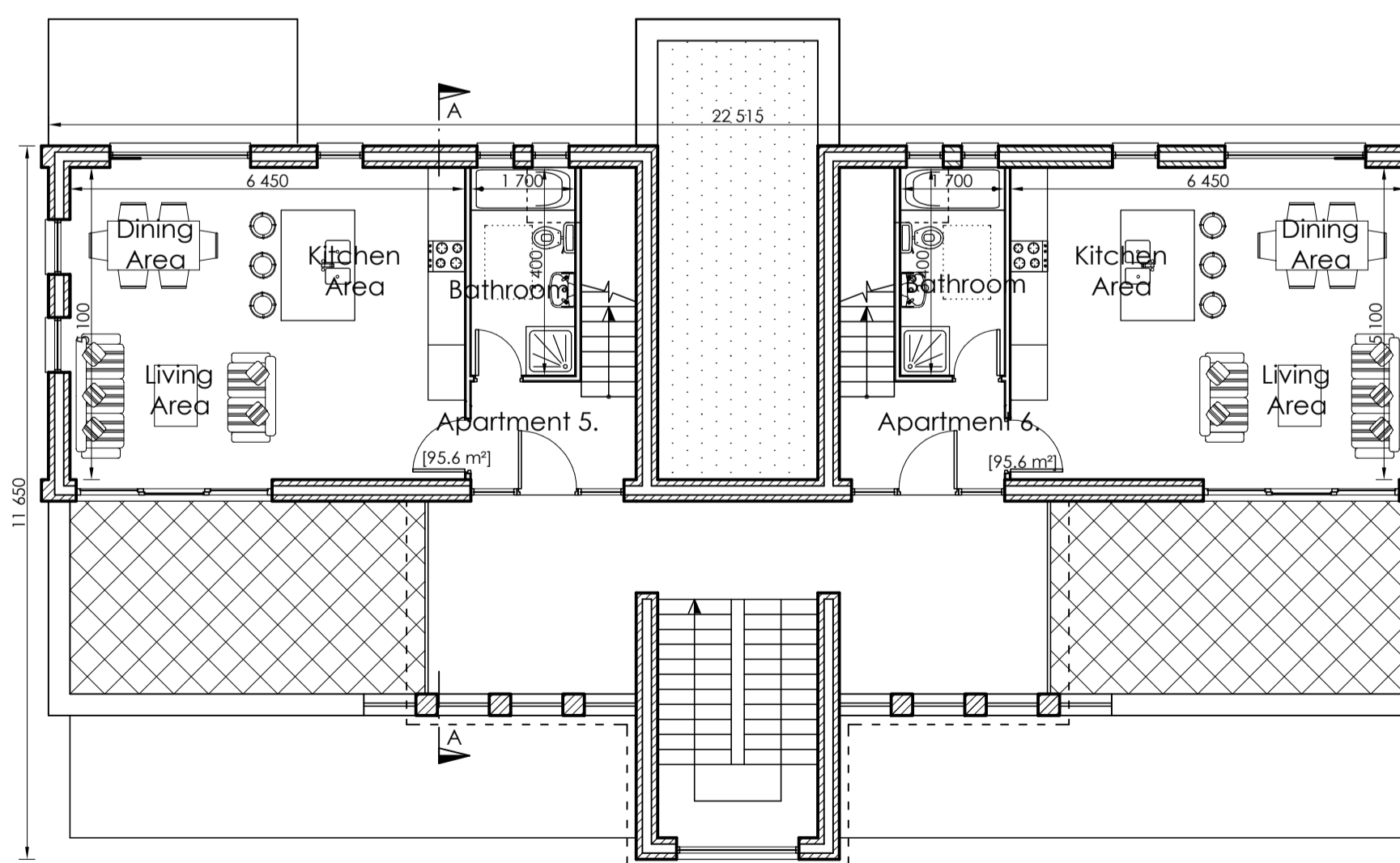
**Side Elevation**

Scale 1:100



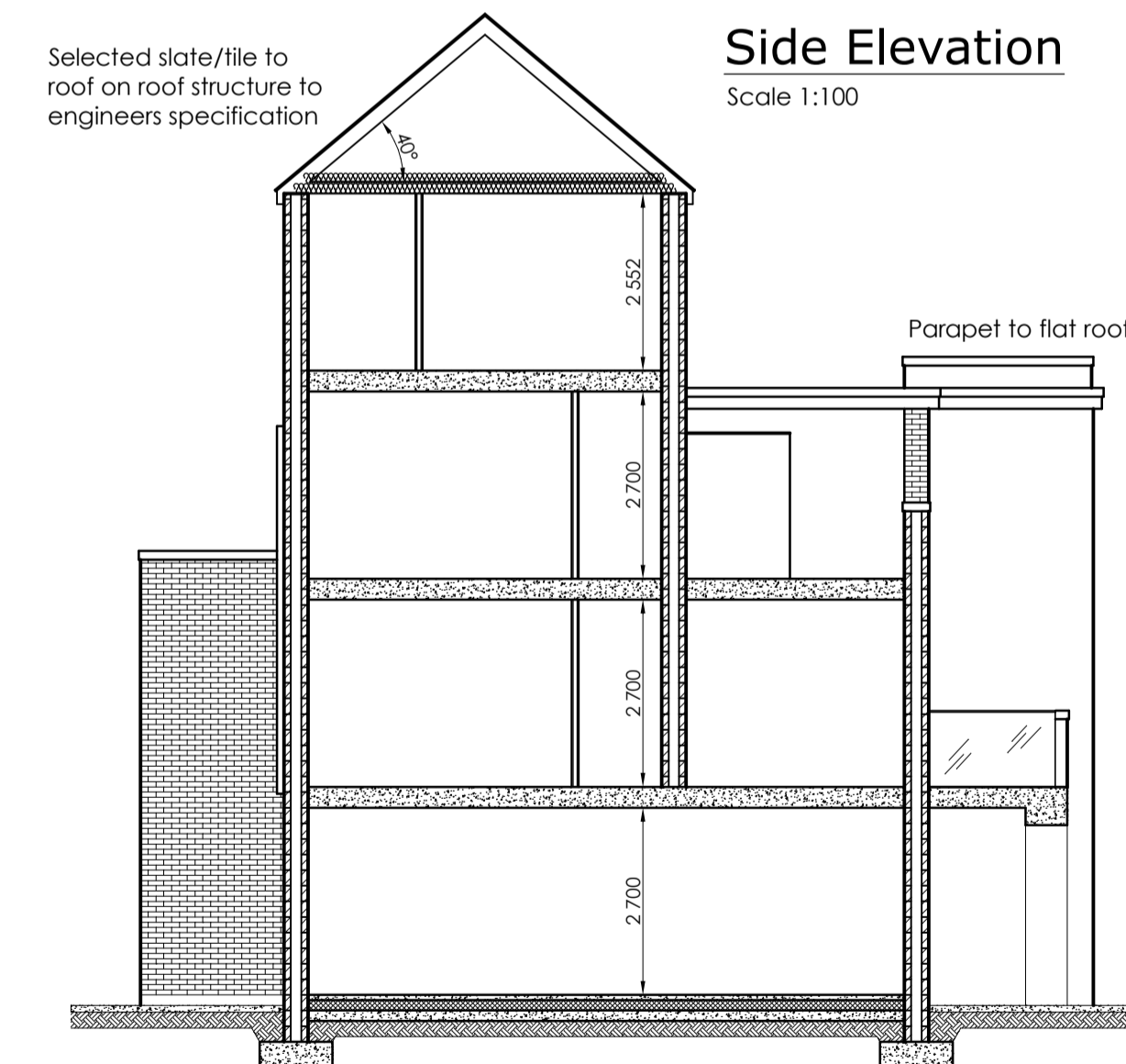
**Ground Floor Plan**

Scale 1:100



**Second Floor Plan**

Scale 1:100



**Section A-A**

Scale 1:100

Concrete foundations in accordance with engineers specification

External wall to be insulated cavity construction, insulation in accordance with Part L specification

Precast concrete suspended floors to Engineers detail

In-situ concrete floor, insulation in accordance with Part L specification

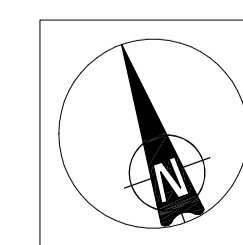


Type 'B' [Total Area = 5 x 668.4 m<sup>2</sup>]

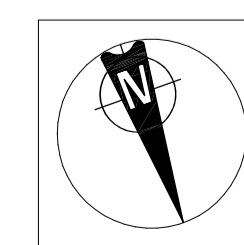
20. 2-bed [79.6 m<sup>2</sup>]

10. 3-bed [95.6 m<sup>2</sup>]

Apartment nos. 94, 95, 96, 97, 100, 101, 102, 103, 106, 107, 108, 109, 140, 141, 142, 143, 146, 147, 148 & 149  
Apartment nos. 98, 99, 104, 105, 110, 111, 144, 145, 150 & 151



House No.: 94-111



House No.: 140-151

Revision	Description	Date
<b>GLEESON MCSWEENEY</b>		
Project: Proposed residential development at Ballykeeffe, Raheen, Limerick. For: DW Raheen Developments Ltd.		Stage: Planning
Title: Apartment Building Type B		
Scale: 1:100 @ A1	Date: December 2021	Drg No.: 1704-10-124
Drawn: M.M.	Rev:	
99 O'Connell St., Limerick		
T 061 412277 E info@gleesonmcsweeney.ie		

ARCHITECTS